

WAND EMULATION LASER INTERFACE BOARD (97-1747-05)

The Accu-Time (PN 97-1747-05) Laser Interface Board serves as a gateway between a wand emulation bar code scanner and an S3000/S5000 Accu-Time Data Collection Terminal (DCT). The wand emulation scanner plugs directly into the RJ12 scanner connector (J1). A supplied 6-conductor modular cable plugs into the RJ12 connector (J2) of the interface board. The other end of the cable plugs into the DCT's wand port completing the scanner-to-terminal link.

The ATS 12VDC @ 1 amp power pack assembly plugs into the power jack input (PJ1) of the interface board. The captive 6.5" power cable on the interface board plugs into the DCT power port. This connectivity completes the operational power requirements of both the scanner and DCT.

(Note: The total current draw of the wand emulation bar code scanner must not exceed 250 milliamps while in the scanning mode--see manufacturers specification.)

RJ12 Scanner Input Connector

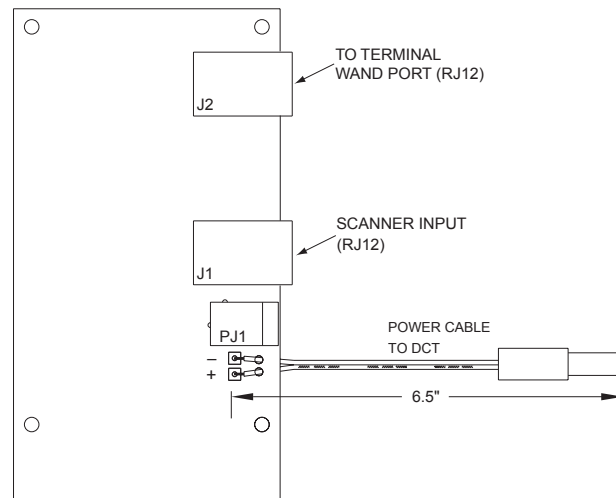
- 1- Earth ground
- 2- Ground
- 3- +5VDC
- 4- +5VDC
- 5- Scanner data
- 6- N/C

GENERAL SPECIFICATIONS

Physical-
Dimensions: 2.20" W X 4.10" L
(5.6 cm W X 10.4 cm L)
Weight: 0.10 lb. (0.05kg)

Environmental-
Operating Temp: 32° to 110°F
(0° to 43°C)
Relative Humidity: 20-90%
Non-Condensing

Operating Parameters-
Power: Passive



97174705a